

LIGHT-CURING BOX

LC-TRAY PRO

MAINTENANCE AND USER MANUAL



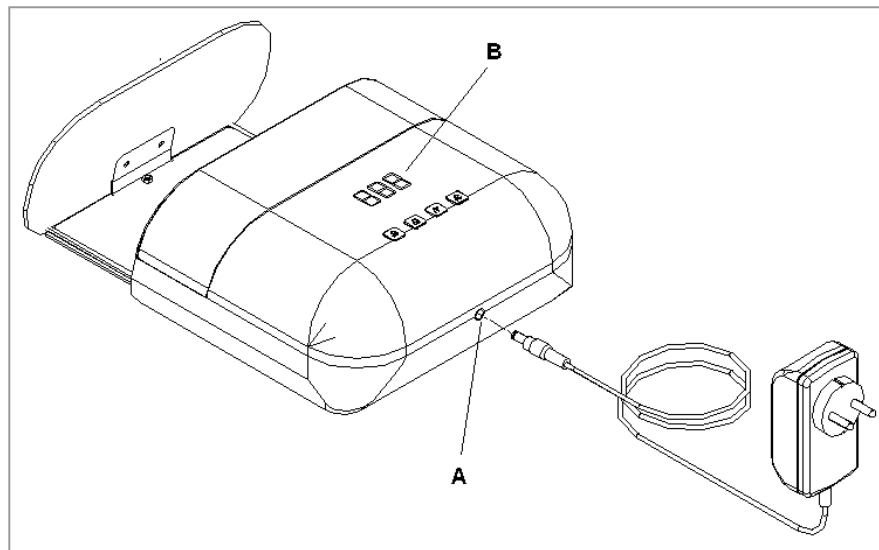
DESCRIPTION

LC-Tray Pro is a light-curing box suitable to light-cure resins and other light-sensitive composites commonly used in the dental practice and in the dental technique. This unit has been mainly designed to harden materials utilised in the preparation of impression trays. The unit is equipped with UV LED cold light lamps, with a spectrum range of 365-405 nanometers (blue-violet color), which are ideally located in order to cover the object without leaving shadow corners. The internal surface is coated with highly reflecting walls, in order to best exploit the irradiation power and avoiding to waste radiations which could be detrimental to the sight.

INSTALLATION

Unpack the unit and locate the power cable with the transformer. Place the unit in a dry, well-ventilated place.

Connect power cable into socket (A) located on the rear wall of the unit and the other end into the main electrical socket (tension from 100 to 240VAC - 50/60Hz). Provided the unit has been correctly fed, the display (B) will light up.



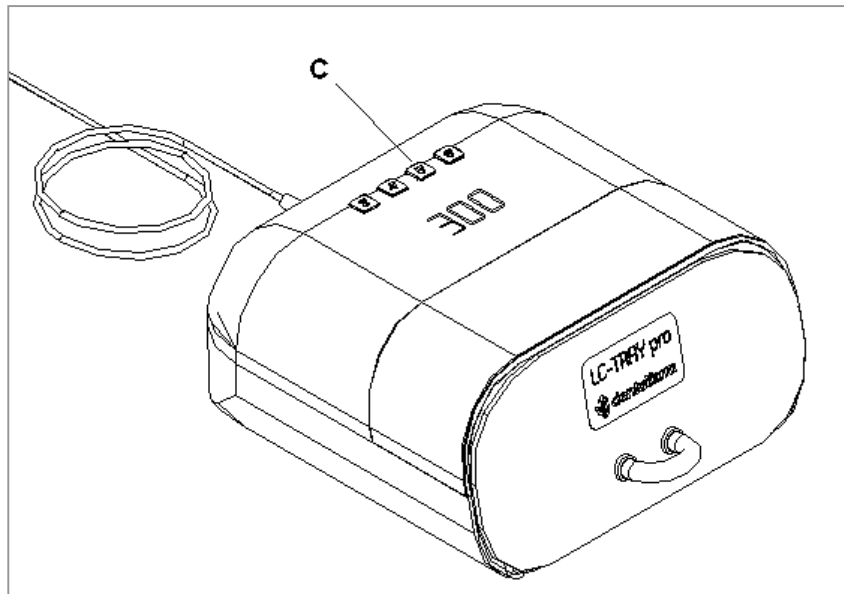
WORKING OPERATION

Pull out the drawer and place the objects to be light-cured on the plate; if more than one objects are inserted, ensure that the higher parts do not transmit any shadow on the lower ones, which could affect the results of the hardening process.

Close firmly the drawer and select the working time: press one of the (C) keys corresponding to preset times (value expressed in minutes). The working cycle will start in the immediate and is completed automatically at the end of the selected time. Selected time can be repeated to extend the cycles and 5 consecutive cycles as a maximum can be carried out in sequence, after that we recommend to wait for at least 30 minutes to allow all components to cool down. When working, the cycle will be interrupted by pressing one of the 4 keys.

Warning!

To avoid sight damages, do not leave the drawer open when UV lamps are on.



TECHNICAL FEATURES

Overall dimensions	180 x 180 x 100h mm
Drawer dimensions	135 x 100 x 50h mm
Packing size	290 x 270 x 190h mm
Power supply	100v-240v AC 50/60Hz
Tension	12v DC
Rated power	12W
Lamps	18 UV LEDs + UV fluorescent lamp
Spectrum	385 - 450 nanometers (blue-violet colour)
Operating times	Fixed 3 / 4 / 5 / 6 min cycles (repeatable)
Net and gross weight	0,9 kg – 1,4 kg

TECHNICAL REFERENCE REGULATIONS AND TEST PROCEDURES

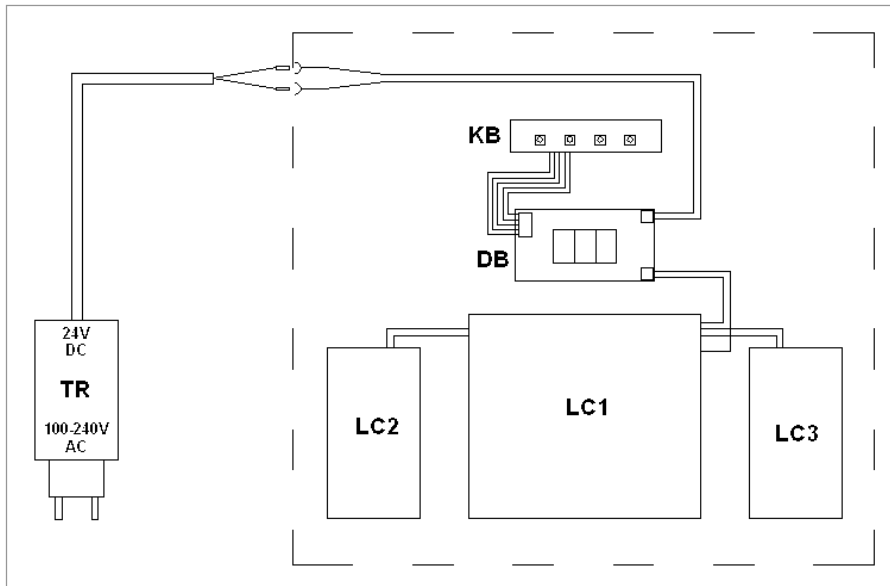
Dentalfarm LC-TRAY RPO is mass-manufactured by Dentalfarm in compliance with technical and safety rules in force, as provided for by the 2006/42/EEC Community Directive on machinery.

WASTE AND DISPOSAL

According to international regulations, this unit has been classified as AEE (electric and electronic device, whose correct operation depends on electric rating and electromagnetic fields) and as a consequence, at the end of its lifetime, it can not be treated as normal waste material but it must be disposed separately, complying with the Directive 2002/96/EEC.



WIRING DIAGRAM



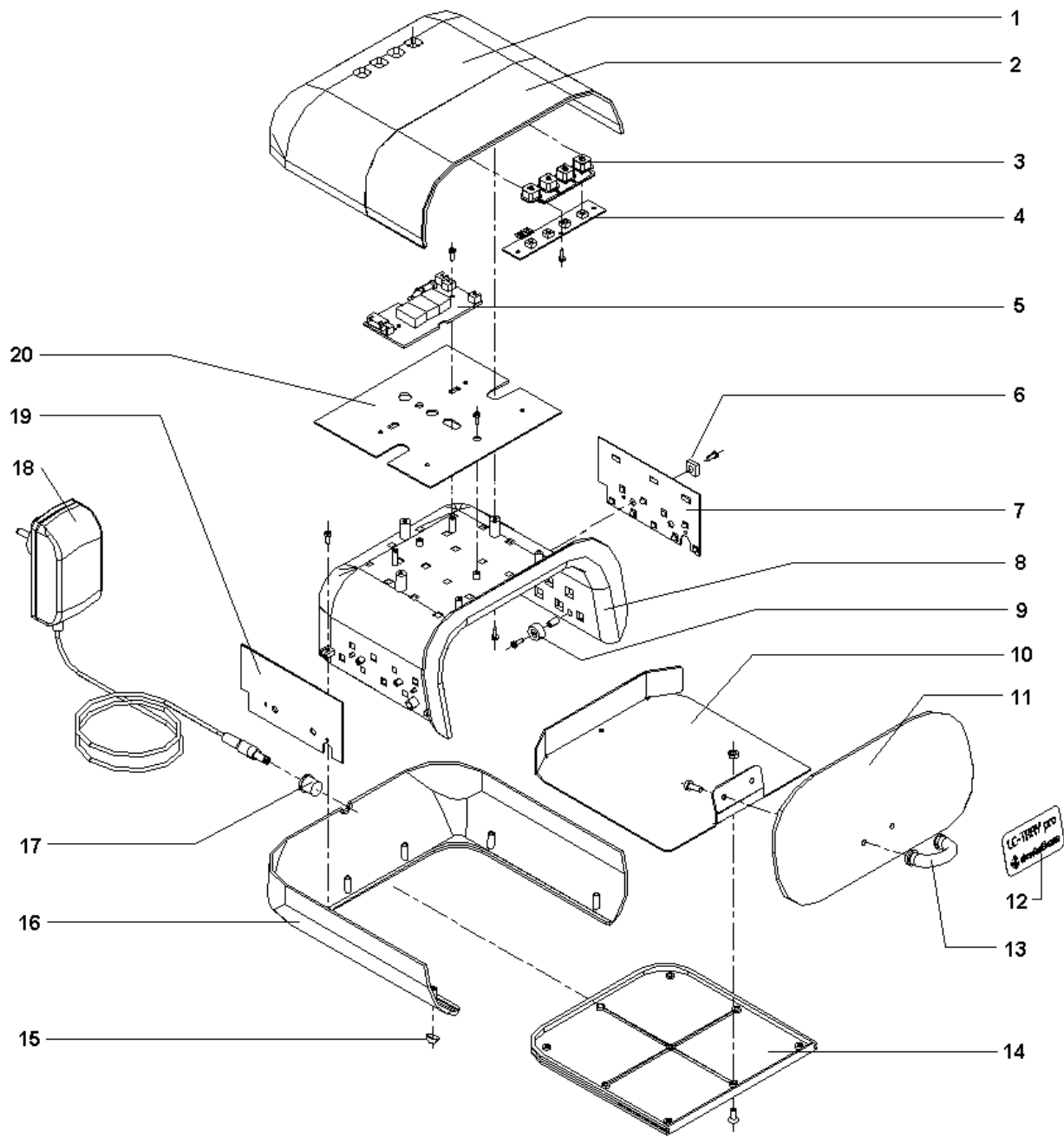
Pos.	Description
TR	100-240vac power supply
DB	Display circuit
KB	Keyboard circuit
LC1	Upper LED circuit
LC2	Left side LED circuit
LC3	Right side LED circuit

TECHNICAL FEATURES

Overall dimensions	220 x 240 x 110h mm
Drawer dimensions	155 x 145 x 70h mm
Packing size	290 x 260 x 140h mm
Power supply	100-240VAC 50/60Hz
Tension	24VDC
Rated power	1,5Amp
Lamps	36 High Power UV LEDs (48W)
Spectrum	365 - 405 nanometers (blue-violet colour)
Operating times	Fixed 3 / 4 / 5 / 6 min cycles (repeatable)
Net and gross weight	1,0 kg – 1,5 kg

EXPLODED DRAWING AND SPARE-PART LIST

POS.	CODE	DESCRIPTION
1	5413011	UPPER SHELL
2	5413012	SILVER BAND
3	5413016	GROUP 4 TIME KEYS
4	5413024	KEYBOARD CIRCUIT
5	5413023	DISPLAY CIRCUIT
6	5413015	CIRCUIT PRESSURE TILE
7	5413021	RIGHT SIDE LED CIRCUIT
8	5413013	WORKING CHAMBER
9	NVG051	DRAWER STOP PIN
10	5413002	REFLECTING PLATE
11	5413003	FRONT PANEL
12	5413001	BRAND LABEL
13	NVT157	HANDLE
14	5413014	LOWER DRAWER PLATE
15	NVG058	ADHESIVE BOWLS
16	5413010	LOWER SHELL
17	5413026	LOW VOLTAGE CONNECTOR
18	5413027	POWER SUPPLY
19	5413022	LEFT SIDE LED CIRCUIT
20	5413020	UPPER LED CIRCUIT



DENTALFARM s.r.l.

Via Susa, 9/a - 10138 TORINO - ITALY

☎ Customer service (+39) 011/4346588

☎ After-sales support - 011/4346632

📠 FAX 011/4346366 - 📧 E-MAIL info@dentalfarm.it

web-site www.dentalfarm.it