

**3M** Science.  
Applied to Life.™

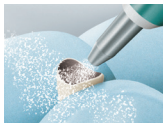
# PFM Crown Cementation



Made easy with  
**3M™ RelyX™ Luting Plus**  
Resin Modified Glass Ionomer Cement

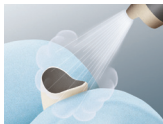


**Prepare  
restoration.**



## **Step 1**

Sandblast surfaces to be cemented with 30 or 50 micron aluminum oxide at a pressure of 2 Bar (30 psi) to create a matte surface appearance.



## **Step 2**

Clean with alcohol and air dry with oil-free air.

**Pretreat  
tooth.**



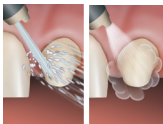
### Step 3

Remove provisional restoration. Mechanically clean prepared tooth (e.g. with pumice paste).



#### Tip:

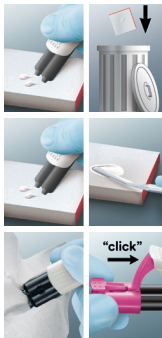
Make sure any residue (temporary cement, desensitizers, astringents, disinfectants, etc.) is completely removed. Do not use  $H_2O_2$ , EDTA or  $Na_2CO_3$ .



### Step 4

Rinse and lightly dry. Leave tooth surface moist. Do not over dry the tooth. Over drying can lead to post operative sensitivity.

**Apply  
cement.**



## Step 5

### For Clicker Delivery:

- Dispense a small amount of cement to ensure even dispensing
- Discard this material
- Apply two clicks of the cement pastes onto a mixpad
- Hand mix with a spatula until a homogeneous mix is obtained
- Wipe the Clicker barrels independently to avoid contamination of the material and premature setting
- Ensure that the cap is put firmly in place (clicking sound).



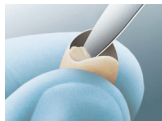
**Tip:** For a crown, typically two clicks would be needed.



## **Step 5**

### **For Automix Delivery:**

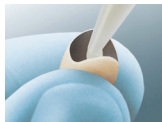
Dispense a small amount of cement onto the mixpad to ensure a perfect mix. Discard this material.



## **Step 6**

### **For Clicker Delivery:**

Apply a thin layer of cement to the inside surface of the restoration.



### **For Automix Delivery:**

Dispense cement directly into the crown.

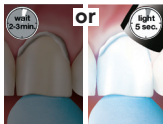


# Seat and Clean-up.



## Step 7

Firmly seat the crown with finger pressure.



## Step 8

Excess cement can be removed 2 minutes after seating the restoration or after tack light curing 5 seconds per surface.



### **Step 9**

Remove excess cement with a scaler while holding the crown in place.



### **Step 10**

Set time is 5 minutes after placement in the mouth. Finish restoration and adjust occlusion.



# Storage.



## Step 11

### For Clicker Delivery:

- Wipe the Clicker barrels independently to avoid contamination of the material and premature setting
- Ensure that the cap is put firmly in place (clicking sound)

### For Automix Delivery:

Store with original sealing cap in place.

NOTE: **DO NOT** store with used mix tip.



**Tip:** To prevent premature curing and drying of the paste, be sure to follow recommended cleaning and storage steps. Ideal storage is normal ambient room temperature of 18–24°C.

**For further reference, please refer to  
Instructions for Use, Step-by-Step  
Card and Frequently Asked Questions.**



**3M Oral Care  
2510 Conway Avenue  
St. Paul, MN 55144-1000 USA**

**Phone 1-800-634-2249  
[3M.com/DentalCements](https://www.3M.com/DentalCements)**

3M, Clicker, Elipar, ESPE, and RelyX are trademarks of 3M or 3M Deutschland GmbH. Used under license in Canada. © 3M 2018. All rights reserved.  
70-2013-0786-8 (REV 7/2018)

**3M** Science.  
Applied to Life.™

# Zirconia Crown Cementation



Made Easy with  
**3M™ RelyX™ Unicem 2**  
**Self-Adhesive Resin Cement**



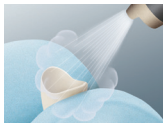
**Prepare  
restoration.**





### **Step 1**

Sandblast surfaces to be cemented with 30 or 50 micron aluminum oxide at a pressure of 2 Bar (30 psi) to create a matte surface appearance.



### **Step 2**

Clean with alcohol and air dry with oil-free air.



### **Tip:**

If sandblasting is done in laboratory before try-in, clean saliva contamination with NaOCl (ca. 5%) and rinse with water. Do not use phosphoric acid for cleaning.



**Pretreat  
tooth.**



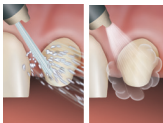
### Step 3

Remove provisional restoration. Mechanically clean prepared tooth (e.g. with pumice paste).



#### Tip:

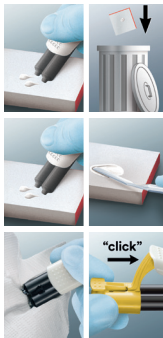
Make sure any residue (temporary cement, desensitizers, astringents, disinfectants, etc.) is completely removed. Do not use  $H_2O_2$ , EDTA or  $NaHCO_3$ .



### Step 4

Rinse and lightly dry. Leave tooth surface moist. Do not over dry the tooth. Over drying can lead to post operative sensitivity.

**Apply  
cement  
and seat.**



## Step 5

### For Clicker Delivery:

- Dispense a small amount of cement to ensure even dispensing
- Discard this material
- Apply two clicks of the cement pastes onto a mixpad
- Hand mix with a spatula until a homogeneous mix is obtained
- Wipe the Clicker barrels independently to avoid contamination of the material and premature setting
- Ensure that the cap is put firmly in place (clicking sound).



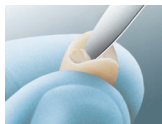
**Tip:** For a crown, typically two clicks would be needed.



## **Step 5**

### **For Automix Delivery:**

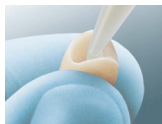
Dispense a small amount of cement onto the mixpad to ensure a perfect mix. Discard this material.



## **Step 6**

### **For Clicker Delivery:**

Use the mixing spatula to apply the cement into the crown.



### **For Automix Delivery:**

Dispense cement directly into the crown.



## **Step 7**

Firmly seat the crown with finger pressure.



**Clean-up.**



## Step 8

Tack cure for 1–2 seconds.



## Step 9

Remove excess cement with a scaler while holding the crown in place.



### Tip:

Do not exceed recommended tack cure time, otherwise clean-up will be difficult. For a controlled curing time, use 3M™ Elipar™ S10 LED Curing Light or 3M™ Elipar™ DeepCure-S LED Curing Light tack curing function.





**Final cure.**



## **Step 10**

Light cure for 20 seconds per surface or wait 6 minutes from start of mix for dark cure. Finish and polish as needed.



**Finished crown.**

**For further reference, please refer to Instructions for Use, Step-by-Step Card and Frequently Asked Questions.**